

Read the spelling words and sentences.

- | | | |
|-----------------|--------------------|---|
| 1. metal | <i>metal</i> | Use the metal spoon to serve the vegetables. |
| 2. hospitality | <i>hospitality</i> | The guests appreciated your hospitality . |
| 3. definition | <i>definition</i> | I need to find the definition of a new word. |
| 4. provision | <i>provision</i> | What provision have we made for a flood? |
| 5. preside | <i>preside</i> | Are you ready to preside over the meeting? |
| 6. crime | <i>crime</i> | She will be punished for her crime . |
| 7. genetics | <i>genetics</i> | Eye color is determined by genetics . |
| 8. period | <i>period</i> | Let's sit quietly for a short period . |
| 9. explore | <i>explore</i> | I'm glad I learned to explore the Internet. |
| 10. hospital | <i>hospital</i> | I had my appendix removed at the hospital . |
| 11. periodic | <i>periodic</i> | The periodic clunk of the icemaker woke me. |
| 12. gene | <i>gene</i> | My grandmother had a gene for curly hair. |
| 13. exploration | <i>exploration</i> | I saw a video about polar exploration . |
| 14. criminal | <i>criminal</i> | Two witnesses identified the criminal . |
| 15. legality | <i>legality</i> | He questioned the legality of the contract. |
| 16. president | <i>president</i> | Dad was elected president of the book club. |
| 17. define | <i>define</i> | I like to define a word with a picture. |
| 18. metallic | <i>metallic</i> | Sasha wore a metallic dress in the show. |
| 19. provide | <i>provide</i> | I'll provide the sandwiches for dinner. |
| 20. legal | <i>legal</i> | It's not legal to park next to a fire hydrant. |

Think & Sort the spelling words.

1–20. Write each base word and its meaning partner. Think about how the vowel sound changes when you add the suffix.

Remember

When a suffix is added to a word, the stress on a syllable often changes and so does the vowel sound: **define, definition**.

Think & Sort

1.

2.

3.

4.

5.

6.

7.

8.

9.

10.

11.

12.

13.

14.

15.

16.

17.

18.

19.

20.

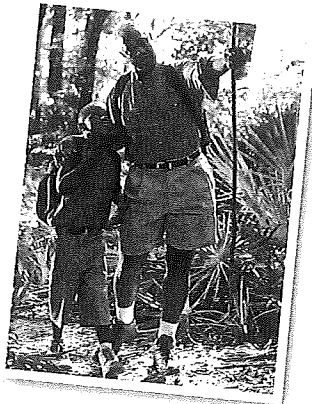
Connections to VOCABULARY

Vowel Changes

Write the spelling word that is a form of each word below.

Circle the letter in each word that changes pronunciation.

1. metal
2. president
3. exploration
4. genetics
5. periodic
6. hospitality



Base Words

A **base word** is a word to which prefixes, suffixes, or other endings are added. Write the spelling word that is made when a suffix is added to each base word below.

7. period
8. define
9. explore
10. provide

Use the
Dictionary

In a dictionary, an entry word is respelled to show how to pronounce it. For example, the word **generous** looks like this: /jĕn'ər əs/.

Write the spelling word for each dictionary respelling below. Check the spelling of your answers in your **Spelling Dictionary**.

- | | |
|--------------------|-------------------------|
| 11. /mĕt' əl/ | 16. /hōs' pĭ tāl' ĭ tē/ |
| 12. /jə nĕt' ĭks/ | 17. /lĕ gāl' ĭ tē/ |
| 13. /krīm/ | 18. /prə vĭd'/ |
| 14. /prĕz' ĭ dənt/ | 19. /dĭ fĭn'/ |
| 15. /lĕ' gəl/ | 20. /krīm' ə nəl/ |

Vowel Changes

1.

2.

3.

4.

5.

6.

Base Words

7.

8.

9.

10.

Use the Dictionary

11.

12.

13.

14.

15.

16.

17.

18.

19.

20.

Connections to READING

metal	hospitality	definition	provision	preside
crime	genetics	period	explore	hospital
periodic	gene	exploration	criminal	legality
president	define	metallic	provide	legal

Meaning Patterns

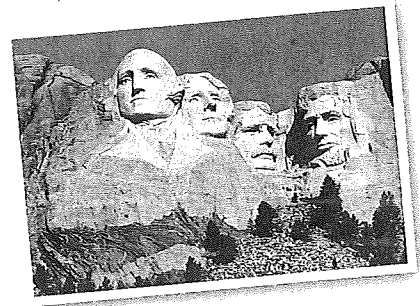
Make Inferences

Use Context Clues

Meaning Patterns

Write the spelling word that is part of each group of related words.

1. hospital, hospitable, _____
2. period, _____, periodical
3. explore, explorer, _____
4. define, _____, definitive
5. preside, _____, presidential



Make Inferences

Write a spelling word or words to complete each sentence.

- 6-7. A drinking cup made of _____ might taste _____.
8. Dinosaurs lived during the Jurassic _____.
9. Will you be able to _____ over the meeting?
- 10-11. Can we _____ a _____ as a unit of heredity?
12. The lawyers debated the _____ of the man's arrest.
13. There is no _____ in the schedule for art classes.
14. In biology class, we studied how the _____ of peas and beans are similar.
15. The woman went to jail for the _____ of robbery.

Use Context Clues

The underlined word or phrase is either a synonym or an antonym of the missing word. Use that context clue to find the spelling word that will complete the sentence. Write the missing word.

16. That _____ is the nearest medical center for burn victims.
17. If you want to discover more about the zoo, you need to _____ it.
18. I have the lawful right to stake a _____ claim to the house.
19. The judge punished the _____ for being a lawbreaker.
20. Eva will withhold her vote unless you _____ some answers.

Connections to WRITING

Proofread a Diary Entry

Proofread the diary entry below for ten misspelled words. Write the spelling words correctly and make the corrections indicated by the proofreading marks.

¶ The science Fair is next month. Tomorrow we have to provide outlines of our projects. we have to difine our subject and tell what we plan to expslore. I will be in the genetiks group. Kelly will ~~also~~ be in the mettal group. Each day for the next month, my group and I will spend third periodd science working on expsloation and understanding what a jene does. Our presidint, Olivia, is in charge of hospitalitie. she has to make sure people can find the exhibits.

Proofreading Marks

≡	Capital Letter
/	Small Letter
^	Add
~	Delete
⊙	Add a Period
¶	Indent

NARRATIVE Writing Prompt

Write a Diary Entry

Write a diary entry about something interesting that's happening at your school. Use as many spelling words as you can.

- Use the writing process: prewrite, draft, revise, edit, and publish.
- Answer *who*, *what*, *when*, *where*, and *why*.
- Be sure to include your thoughts and feelings about your topic.
- Use complete sentences with correct capitalization, punctuation, grammar, and spelling.
- Read your diary entry. Circle three words that may be misspelled. Use a dictionary to check the spelling.

Transfer

Write three pairs of words that show a **vowel sound change** when a suffix is added. Write the words in your Spelling Journal.

Extend & Transfer

Word Study



Pattern Power

1. _____
2. _____
3. _____
4. _____
5. _____
6. _____
7. _____

Suffixes

8. _____
9. _____
10. _____
11. _____
12. _____
13. _____

Word Building

14. _____
15. _____
16. _____

Word Meaning

17. _____
18. _____
19. _____
20. _____

divide	periodic	crime	president	admire
division	gene	criminal	provide	admiration
meter	genetics	define	provision	grave
metric	metal	definition	compose	gravity
hospital	metallic	legal	composition	ignite
hospitality	explore	legality	athlete	ignition
period	exploration	preside	athletic	

Pattern Power

1-7. Write the words in which the vowel sound changes from long to short or long to schwa when a suffix is added. Look at the respellings in the **Spelling Dictionary** to check your answers.

hospital	legal	meter
crime	gene	athlete
preside	grave	admire

Suffixes

Add Latin-derived suffixes to these base words and write spelling words.

-ic	-sion/-tion
8. meter	11. define
9. period	12. provide
10. metal	13. explore

Word Building

Write the base word for each of these words.

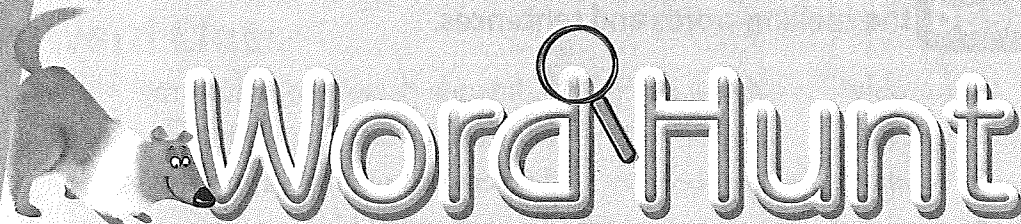
14. legality	15. division	16. hospitality
--------------	--------------	-----------------

Word Meaning

17-20. Write the four words you might hear in a courtroom.

Math

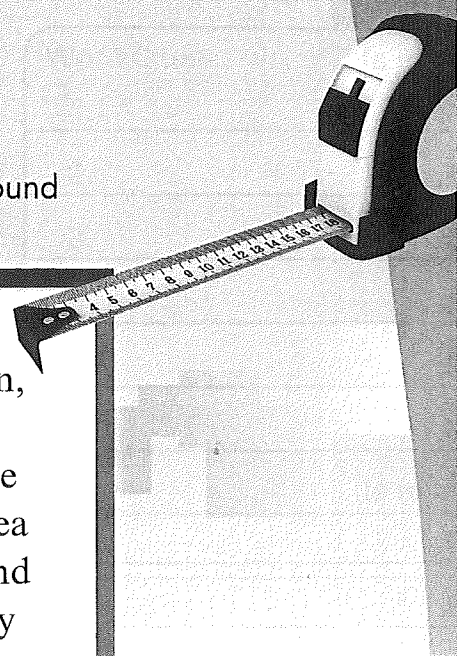
Word Hunt



Read the paragraphs below, and look for words in which a vowel sound changes when a suffix is added.

Mr. Thomas has begun to prepare to add a room to the house. It will be Jamal's bedroom. As part of the preparation, Mr. Thomas asked Jamal to describe his dream room. In his description, Jamal said he'd like to divide the room into three parts. Each division would be for a different activity. One area would be for sleeping, one would be for doing homework, and one would be for relaxing. By definition, the room isn't really a *bed* room, but it'll work.

Next Jamal and his dad must define the space. The bedroom will be 12 feet wide by 15 feet long. There are provisions for three areas. The largest area will provide room for the bed, a night stand, and a dresser. Jamal will use half of the room for sleeping. That area will measure 12 feet by 7.5 feet. Jamal thinks he needs more space for relaxing than for studying, so the relaxation area will measure 7.5 feet by 7 feet. That leaves him an area of 5 feet by 7.5 feet for his desk, a chair, and a bookcase. Jamal and his dad are pleased with their plans.



1.

2.

3.

4.

5.

6.

7.

8.

9.

10.

WORD SORT

1-10. There are five pairs of words in the article above in which a vowel sound changes when a suffix is added. Write the pairs and circle the vowel that changes in each word.